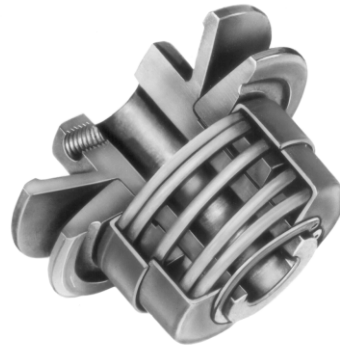
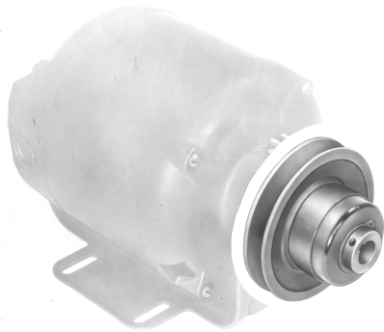


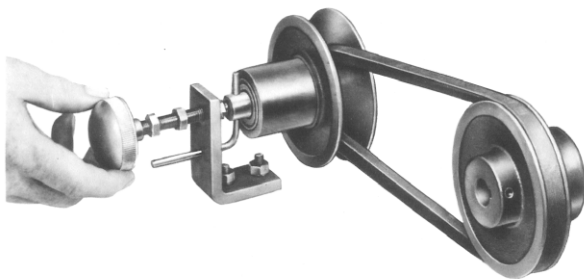


Variable Speed Drives Up To 2 H.P.



Spring-Loaded Sheaves - Automatic Type

Speed Ratios up to 2.19:1, available for drives of 1/4 to 2 H.P. Motor is equipped with Maurey spring-loaded sheave.



Spring-Loaded Sheaves - Manual Type

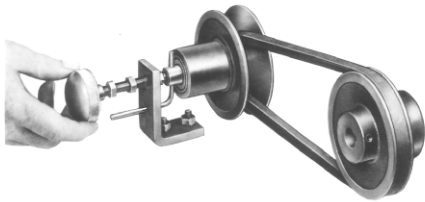
For fixed center drives.



Motor Bases

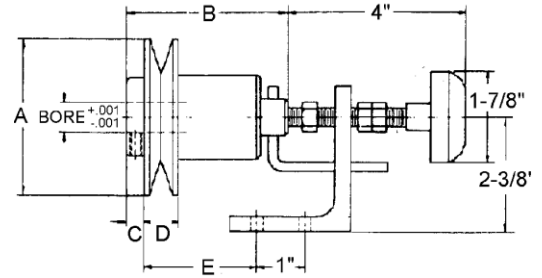


manual control sheaves and controls for fixed center drives for 4L "A" and 5L "B" belts



MANUAL CONTROL SHEAVES

are used in conjunction with spring-loaded sheaves to maintain fixed center distance and provide a higher speed ratio than possible using only a spring-loaded sheave and movable motor base.



ORDERING PROCEDURE

TO SELECT A COMPOUND DRIVE, check the chart on page G-7 and select either your desired horsepower and/or speed ratio. Adjacent column gives you specified model numbers, driven speeds at desired RPM, and NEMA motor frame numbers

TO SELECT FHP V-BELT to fit your system, check charts on page G-7 and move horizontally from desired compound drive to desired distance. Read down to obtain part number of V-Belt.

| Model Number | HP @ RPM | | Speed Ratio | Belt Section | Drive Selection | Weight Lbs |
|--------------|-------------|---------------|-------------|--------------|-----------------|------------|
| | 1750 | 1160 | | | | |
| 6325M | 1/3 & 1/4 | 1/4 | 2.72:1 | A or B | Page G-7 | 2.00 |
| 6400M | 1/2 | 1/3 | 4.00:1 | A or B | Page G-7 | 2.25 |
| 6500M | 1 & 3/4 | 1/2 | 4.17:1 | A or B | Page G-7 | 5.00 |
| 6600M | 2, 1-1/2, 1 | 1-1/2, 1, 3/4 | 4.78:1 | A or B | Page G-7 | 6.50 |

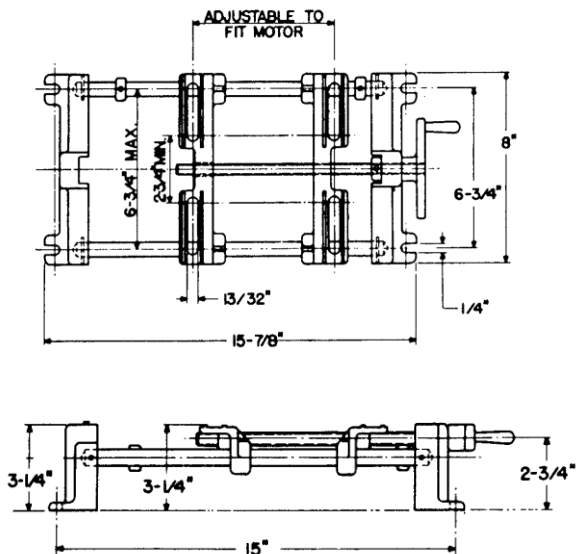
**MC CONTROL
MUST BE ORDERED
SEPARATELY**

| Model Number | DIMENSIONS (INCHES) | | | | | STOCK BORES (INCHES) MARKED "X" | | | | |
|--------------|---------------------|---------|-----|-------|---|---------------------------------|-----|-----|-----|---|
| | A | B | C | D | E | 1/2 | 5/8 | 3/4 | 7/8 | 1 |
| 6325M | 3-1/4 | 3-11/32 | 3/8 | 11/16 | 3 | X | X | X | | |
| 6400M | 4 | 3-11/32 | 3/8 | 11/16 | 3 | X | X | X | | |
| 6500M | 5 | 4-5/16 | 1/2 | 15/16 | 4 | | X | X | X | X |
| 6600M | 6 | 4-5/16 | 1/2 | 15/16 | 4 | | X | X | X | X |

For keyway dimensions please refer to chart on page G-2.



adjustable motor bases



MODEL NO. 6000

Standard adjustable motor base for motors up to and including 2 H.P. Easily moves the sheave through its speed range. Shipping weight, 12 lbs.