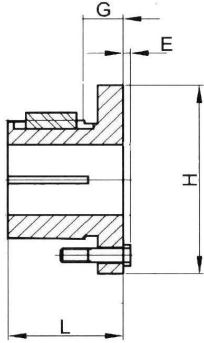




Split-Barrel Bushings - Stock Dimensions



SPLIT BARREL BUSHINGS				
PART NUMBER	DIMENSIONS			
	L	G	E	H
P1	1 - 15/16	5/8	1/4	3
P2	2 - 15/16	5/8	1/4	3
Q1	2 - 1/2	3/4	9/32	4 - 1/8
Q2	3 - 1/2	3/4	9/32	4 - 1/8
R1	2 - 7/8	15/16	9/32	4 - 5/8
R2	4 - 7/8	15/16	9/32	4 - 5/8
S1	4 - 3/8	1-1/8	3/8	5 - 3/8
S2	6 - 3/4	1-1/8	3/8	5 - 3/8



TYPE 1



TYPE 2

P1 AND P2 BUSHINGS ARE TYPE 1 THRU 1-7/16", TYPE 2 FOR 1-1/2" AND LARGER BORES
 Q1 AND Q2 BUSHINGS ARE TYPE 1 THRU 2-1/16" AND ARE TYPE 2 FOR 2-1/8" AND LARGER BORES
 R1 AND R2 BUSHINGS ARE TYPE 1 THRU 2-13/16" AND ARE TYPE 2 FOR 2-7/8" AND LARGER BORES
 S1 AND S2 BUSHINGS ARE TYPE 1 THRU 3-3/16" AND ARE TYPE 2 FOR 3-1/4" AND LARGER BORES

SPLIT BARREL BUSHINGS												
PART NUMBER	STOCK BORES											
	1/2	5/8	3/4	7/8	1	1-1/8	1-3/16	1-1/4	1-3/8	1-7/16	1-1/2	1-5/8
P1	X	X	X	X	X	X	X	X	X	X	X	X
P2			X	X	X	X	X	X	X	X	X	X
Q1			X	X	X	X	X	X	X	X	X	X
Q2										X	X	X
R1												X
R2												

PART NUMBER	STOCK BORES											
	1-11/16	1-3/4	1-7/8	1-15/16	2	2-1/8	2-3/16	2-1/4	2-3/8	2-7/16	2-1/2	2-5/8
P1	X	X	----	----	----	----	----	----	----	----	----	----
P2	X	X	----	----	----	----	----	----	----	----	----	----
Q1	X	X	X	X	X	X	X	X	X	X	X	X
Q2	X		X	X	X	X	X		X	X		
R1				X		X	X		X	X		
R2				X		X	X		X	X		
S1			X	X								
S2										X		

PART NUMBER	STOCK BORES											
	2-11/16	2-7/8	2-15/16	3-3/16	3-1/4	3-3/8	3-7/16	3-5/8	3-7/8	3-15/16	4	
Q1	X	----	----	----	----	----	----	----	----	----	----	
Q2	X	----	----	----	----	----	----	----	----	----	----	
R1	X	X	X			X						
R2	X	X	X	X		X	X					
S1					X	X	X				X	
S2	X		X	X			X			X		

---- LARGER THAN MAX BORE
 NON-STOCK BORE