

An Overview of Maurey Manufacturing Corp



Yesterday and Today



Maurey Manufacturing Corporation was founded in 1917 as Up To Date Machine Works by Eugene Maurey Sr. Early products, which included wheel locks for Model-T Fords and woodworking equipment, soon evolved into the manufacture of steel v-belt pulleys for industry.

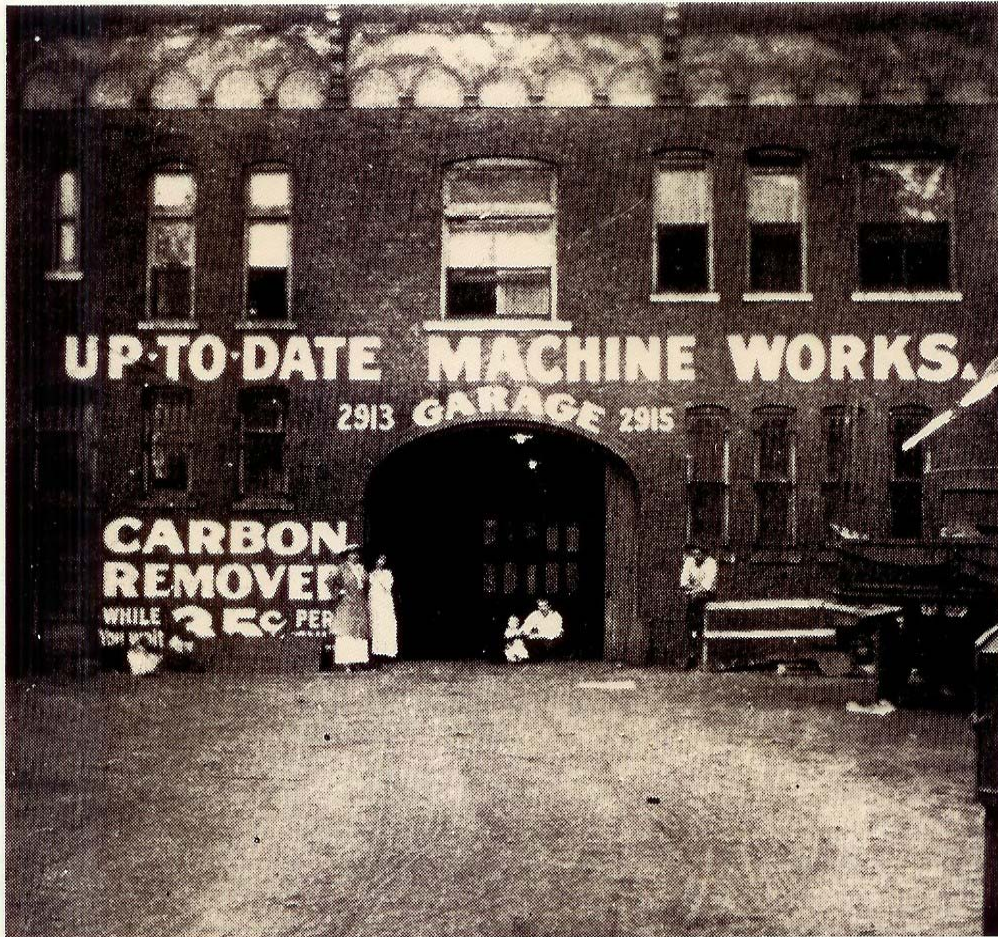




What's their connection to Model T's,
Lillian Russell and V-Pulleys?

Our founder, Eugene Maurey, purchased Lillian Russell's coach house when he started his company in 1917. This is a picture of his employees several years later. That's Eugene Maurey at the far right in the second row. Joseph E. Maurey (then four years old), is second from the right in the first row.





In case you've been wondering
whatever happened to the
Up to Date Machine Works

By 1932, Maurey V-pulleys were in demand nationwide, and the most important product of Up To Date Machine Works. In 1933, the company name was changed to Maurey Manufacturing Corporation to reflect its changing character...ending one era and beginning another



Maurey Since 1933



- 1935 – Joseph E. Maurey began to work for the firm and focused the company on manufacturing v-belt drive components
- 1948 – Established a marketing partnership with Goodyear Tire and Rubber Company
- 1950s-1960s – Developed pressed steel sheave line into turned steel and cast iron sheave line into the most complete light duty line in the industry
- 2001 – Corporate headquarters relocated to Holly Springs
- 2005 – Joseph W. Maurey named President and CEO



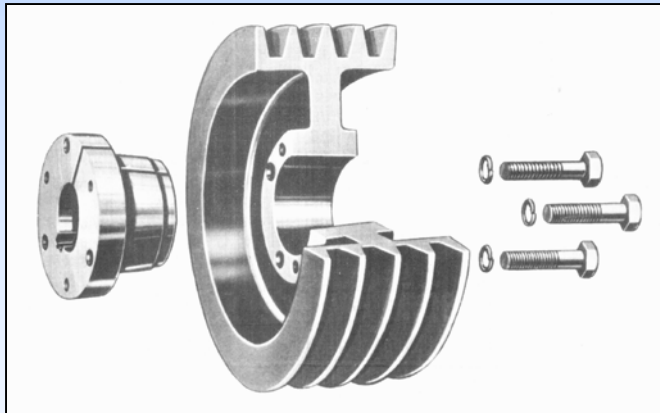
Maurey Manufacturing and Holly Springs



- 1985 – Purchased 12 Acres of Land
- 1986 – Completion of 42,000 sq feet of manufacturing complex
- 1988 – Completion of 30,000 sq feet of warehousing space
- 1989 – Completion of 42,000 additional sq feet of manufacturing space
- 2000 – Completion of 30,000 additional sq feet of warehousing space



Some Product Advantages



- Most complete line of fixed pitch single and double groove finished bore and light duty bushed sheaves in the industry
- Full line of Maurey variable pitch sheaves with internal locking key and full line of removable key variable pitch sheaves
- Both zinc phosphate and powder coat paint finishes available
- Both Maurey Style and AK/BK Style of light duty available
- Finished bore light duty sheaves have feature full hubs for maximum holding power on setscrews



Recent Maurey Product Additions

Split Taper Sheaves and Bushings

- Double keyed for additional torque capacity
- Ideal for QD applications where a shallow key would be used



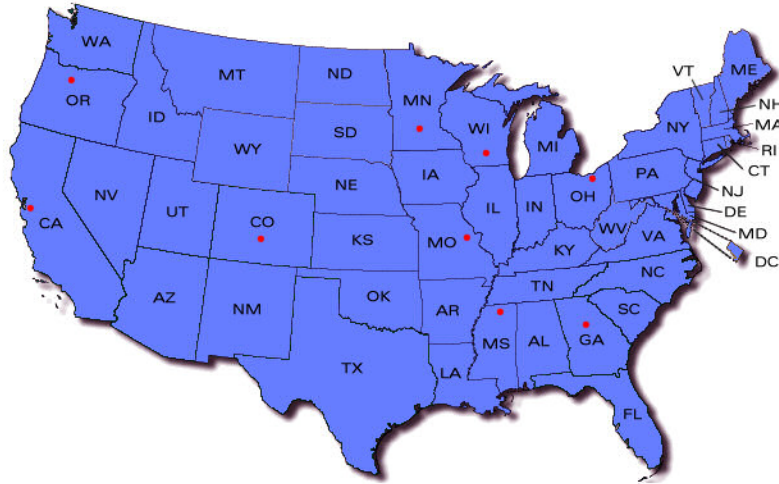
Split Steel Sheaves

- Economical product ideal for light duty applications
- Dominant deck sheave in the mower industry
- US Made = less lead-time



Maurey Manufacturing Advantages

Maurey Distribution Locations



Other Advantages:

- Small privately held firm enables us to be more responsive to customer needs
- Ful-Grip (QD) is the most widely used bushing system in America
- Broader Light Duty Line offers more drive choices

Strategically Positioned Inventories in:

- Atlanta
- Charlotte
- Cleveland
- Denver
- Kansas City
- Los Angeles
- Minneapolis
- Portland
- St Louis
- Madison, WI



Maurey Manufacturing's memberships in the industry

- Mechanical Power Transmission Association (MPTA)
- Rubber Manufacturers Association (RMA)
- Power Transmission Distributors Association (PTDA)
- Power-Motion Technologies Representatives Association (PTRA)
- Heating, Air-Conditioning and Refrigeration Distributors International (HARDI)

