



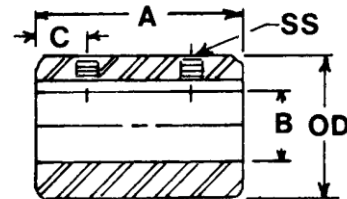
Hi-Q® Sleeve Couplings

finished bore and bushed type

Finished Bore Sleeve Couplings



Maurey finished bore couplings are machined from bar steel, with standard keyseats and hollow head set screws.



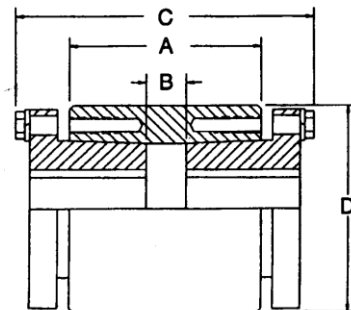
Part No.	O.D.	A	B	C	Set Screw	Weight Lbs	Keyway
SC04	1/2	3/4	1/4	3/16	8-32 x 1/8"	.06	None
SC05	5/8	1	5/16	1/4	8-32 x 1/8"	.06	None
SC06	3/4	1	3/8	1/4	10-24 x 1/8"	.1	None
SC08	1	1-1/2	1/2	3/8	1/4-20 x 1/4"	.2	1/8 x 1/16
SC10	1-1/4	2	5/8	1/2	5/16-18 x 5/16"	.5	3/16 x 3/32
SC12	1-1/2	2	3/4	1/2	5/16-18 x 3/8"	.8	3/16 x 3/32
SC14	1-3/4	2	7/8	1/2	5/16-18 x 3/8"	1.0	3/16 x 3/32
SC16	2	3	1	3/4	3/8-16 x 1/2"	1.9	1/4 x 1/8
SC18	2-1/8	3	1-1/8	3/4	3/8-16 x 1/2"	2.1	1/4 x 1/8
SC20	2-1/4	4	1-1/4	1	3/8-16 x 1/2"	3.1	1/4 x 1/8
SC22	2-1/2	4-1/2	1-3/8	1	3/8-16 x 1/2"	4.3	5/16 x 5/32



Rigid Bushed Sleeve Couplings



Bushed sleeve couplings provide a simple and economical way to join two shafts of different diameters. Made from steel, these couplings use the gripping strength of tapered bushings to eliminate the need for shrink fits.



Part Number	Bushing Size	Bore Range	Maximum Torque*	A	B	C	D	Weight Less Bushing
SCHQ	HQ	3/8" - 1-1/2"	1,700 in.lbs	2	5/16	3-9/32	2-1/2	1.63
SCSD	SD	1/2" - 2"	7,000 in.lbs	3	5/8	4-3/4	3-1/4	3.69
SCSK	SK	1/2" - 2-5/8"	7,000 in.lbs	4	1-11/16	6	4-1/4	9.00

* Maximum torque is in inch-pounds. For heavy or shock loads use one half of this torque rating.

* Torque ratings expressed here are based on bushing and coupling strength. Smaller bores and shafts may not be able to withstand these torques. Always check the shaft and keyway strengths before using.