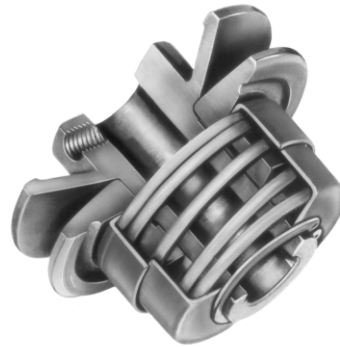
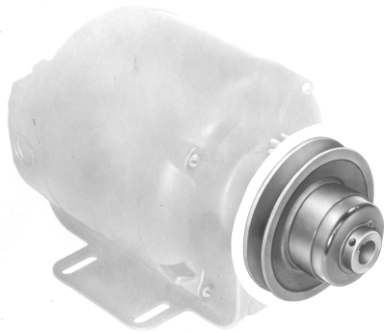


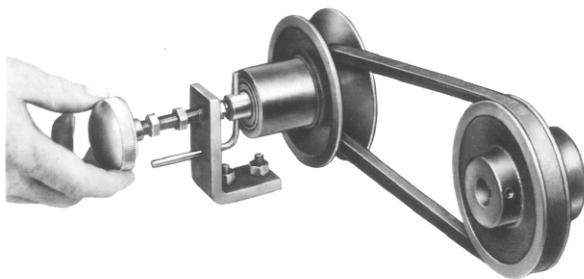


Variable Speed Drives Up To 2 H.P.



Spring-Loaded Sheaves - Automatic Type

Speed Ratios up to 2.19:1, available for drives of 1/4 to 2 H.P. Motor is equipped with Maurey spring-loaded sheave.



Spring-Loaded Sheaves - Manual Type

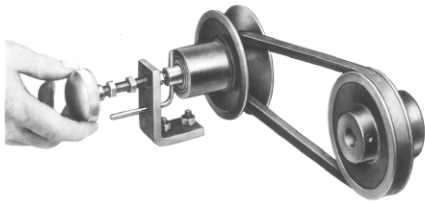
For fixed center drives.



Motor Bases

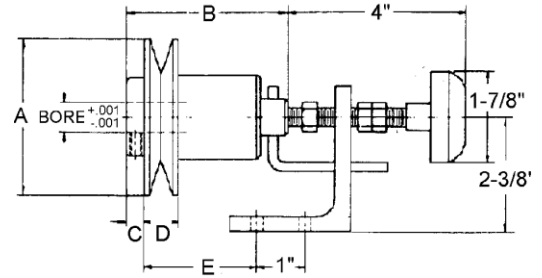


manual control sheaves and controls for fixed center drives for 4L "A" and 5L "B" belts



MANUAL CONTROL SHEAVES

are used in conjunction with spring-loaded sheaves to maintain fixed center distance and provide a higher speed ratio than possible using only a spring-loaded sheave and movable motor base.



ORDERING PROCEDURE

TO SELECT A COMPOUND DRIVE, check the chart on page G-7 and select either your desired horsepower and/or speed ratio. Adjacent column gives you specified model numbers, driven speeds at desired RPM, and NEMA motor frame numbers

TO SELECT FHP V-BELT to fit your system, check charts on page G-7 and move horizontally from desired compound drive to desired distance. Read down to obtain part number of V-Belt.

Model Number	HP @ RPM		Speed Ratio	Belt Section	Drive Selection	Weight Lbs
	1750	1160				
6325M	1/3 & 1/4	1/4	2.72:1	A or B	Page G-7	2.00
6400M	1/2	1/3	4.00:1	A or B	Page G-7	2.25
6500M	1 & 3/4	1/2	4.17:1	A or B	Page G-7	5.00
6600M	2, 1-1/2, 1	1-1/2, 1, 3/4	4.78:1	A or B	Page G-7	6.50

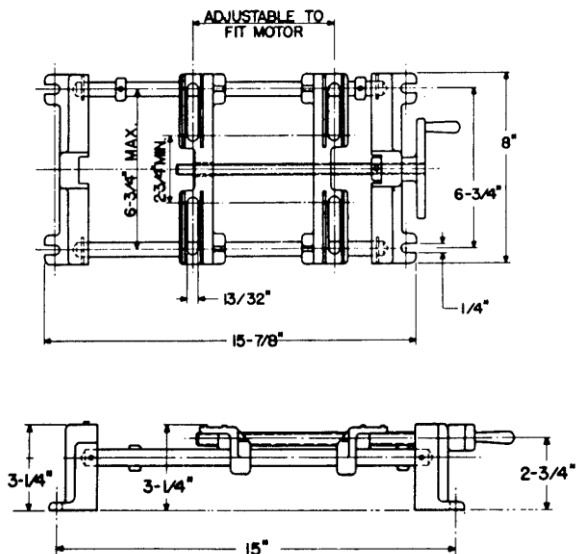
**MC CONTROL
MUST BE ORDERED
SEPARATELY**

Model Number	DIMENSIONS (INCHES)					STOCK BORES (INCHES) MARKED "X"				
	A	B	C	D	E	1/2	5/8	3/4	7/8	1
6325M	3-1/4	3-11/32	3/8	11/16	3	X	X	X		
6400M	4	3-11/32	3/8	11/16	3	X	X	X		
6500M	5	4-5/16	1/2	15/16	4		X	X	X	X
6600M	6	4-5/16	1/2	15/16	4		X	X	X	X

For keyway dimensions please refer to chart on page G-2.



adjustable motor bases



MODEL NO. 6000

Standard adjustable motor base for motors up to and including 2 H.P. Easily moves the sheave through its speed range. Shipping weight, 12 lbs.

ORDERING EXAMPLE FOR COMPLETE DRIVE PACKAGE

Manual control sheave can be used on driver or driven unit. In this example we will use manual control sheave on driver unit

Drive Requirements:

1/3 H.P. Motor @ 1750 RPM
 Motor Shaft Size: 5/8"
 Driven Shaft Size: 5/8"

Desired:

Speed Range 875 to 3500 RPM
 Belt Center Distance: 8.3"

Order:

Model 6400M x 5/8" Manual Control Sheave
 MC Control - Control for Manual Control Sheave
 Model 6400 x 5/8" Spring-Loaded Sheave
 4L260 Belt

Selection Note: Most efficient drive occurs when manual control and spring-loaded sheave are same diameter.

Compound Drive Selection Tables

HP Selection	Speed Ratio Selection	Model Number Selection at Motor RPM		Driven Speed				NEMA Motor Frame Numbers
		1750 RPM	1160 RPM	1750 RPM		1160 RPM		
				Min.	Max.	Min.	Max.	
1/4	2.72 : 1	6325-6325M	6325-6325M	1061	2886	703	1913	48, 56, 56H, 66
1/3	2.72 : 1	6325-6325M	6325-6325M	1061	2886	703	1913	48, 56, 56H, 66
1/3	4.00 : 1		6400-6400M			580	2320	48, 56, 56H, 66
1/2	4.00 : 1	6400-6400M		875	3500			48, 56, 56H, 66
1/2	4.17 : 1		6500-6500M			568	2369	56, 56H, 66, 182, 184, 143T, 145T
3/4	4.17 : 1	6500-6500M		857	3574			56, 56H, 66, 182, 184, 143T, 145T
3/4	4.78 : 1		6600-6600M			530	2537	56, 56H, 66, 182, 184, 143T, 145T
1	4.17 : 1	6500-6500M		857	3574			56, 56H, 66, 182, 184, 143T, 145T
1	4.78 : 1	6600-6600M		800	3828			56, 56H, 66, 182, 184, 143T, 145T
1	4.78 : 1		66150-6600M			530	2537	56, 56H, 66, 182, 184, 143T, 145T
1-1/2	4.78 : 1	66150-6600M		800	3828			56, 56H, 66, 182, 184, 143T, 145T
1-1/2	4.78 : 1		66100-6600M			530	2537	56, 56H, 66, 182, 184, 143T, 145T
2	4.78 : 1	66200-6600M		800	3828			56, 56H, 66, 182, 184, 143T, 145T

CENTER DISTANCE (INCHES) FOR COMPOUND DRIVES

Compound Drive	MANUAL CONTROL SHEAVE AT OPEN POSITION (MINIMUM P.D.) SPRING LOADED SHEAVE AT CLOSED POSITION (MAXIMUM P.D.)															
	5.9	6.4	6.9	7.4	7.9	8.4	8.9	9.9	10.9	12.9	14.9	15.9	17.9	20.9	22.9	25.9
6325 6325M																
6400 6400M			6.2	6.7	7.3	7.8	8.3	9.3	10.3	12.3	14.3	15.3	17.3	20.3	22.3	25.3
	4L 200	4L 210	4L 220	4L 230	4L 240	4L 250	4L 260	4L 280	4L 300	4L 340	4L 380	4L 400	4L 440	4L 500	4L 540	4L 600

CENTER DISTANCE (INCHES) FOR COMPOUND DRIVES

Compound Drive	MANUAL CONTROL SHEAVE AT OPEN POSITION (MINIMUM P.D.) SPRING LOADED SHEAVE AT CLOSED POSITION (MAXIMUM P.D.)															
	6.0	6.5	7.0	7.5	8.0	9.0	10.0	11.0	12.0	13.0	14.1	16.1	18.1	19.1	21.1	24.1
6500 6500M																
66150 6600 66200 6600M					7.0	8.0	9.1	10.1	11.2	12.2	13.2	15.3	17.3	18.3	20.3	23.3
	B21	B22	B23	B24	B25	B27	B29	B31	B33	B35	B37	B41	B45	B47	B51	B57