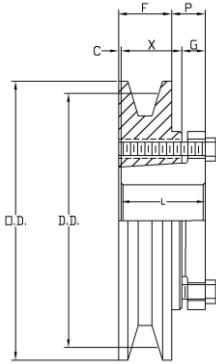
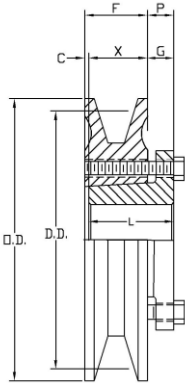




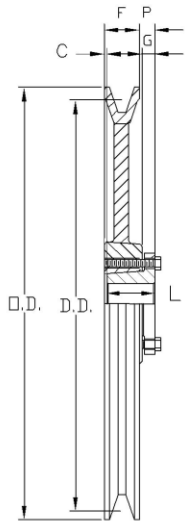
# HQ Ful-Grip Sheaves-Single Groove



**STYLE 1**



**STYLE 2**



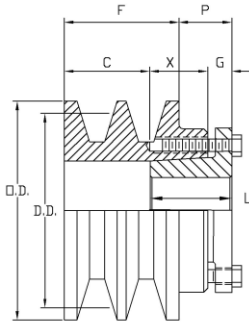
**STYLE 4**

## For Both Belt Sections "A" (4L) and "O" (3L)

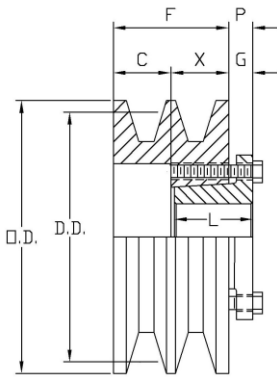
O.D. Inches	D.D. A Belts Inches	D.D. O Belts Inches	Part Number	Original Maurey Number	Style	Weight (Lbs)	Dimensions - Inches					
							F	L	P	C	X	G
3.05	2.8	2.5	AK30H	---	1	1.1	3/4	1 1/4	7/8	---	1-3/16	7/16
3.25	3.0	2.7	AK32H	---	1	1.2	3/4	1 1/4	7/8	---	1-3/16	7/16
3.45	3.2	2.9	AK34H	---	2	1.0	3/4	1 1/4	9/16	---	7/8	7/16
3.75	3.5	3.2	AK39H	---	2	1.4	3/4	1 1/4	9/16	---	7/8	7/16
3.95	3.7	3.4	AK41H	AH40	2	1.6	3/4	1 1/4	9/16	---	7/8	7/16
4.25	4.0	3.7	AK44H	AH43	2	1.9	3/4	1 1/4	9/16	---	7/8	7/16
4.45	4.2	3.9	AK46H	AH45	2	1.9	3/4	1 1/4	9/16	---	7/8	7/16
4.75	4.5	4.2	AK49H	AH48	2	2.1	3/4	1 1/4	9/16	---	7/8	7/16
4.95	4.7	4.4	AK51H	AH50	2	2.3	3/4	1 1/4	9/16	---	7/8	7/16
5.25	5.0	4.7	AK54H	AH53	2	2.0	3/4	1 1/4	9/16	---	7/8	7/16
5.45	5.2	4.9	AK56H	AH55	2	2.3	3/4	1 1/4	9/16	---	7/8	7/16
5.75	5.5	5.2	AK59H	---	2	2.4	3/4	1 1/4	9/16	---	7/8	7/16
5.95	5.7	5.4	AK61H	AH60	4	2.5	3/4	1 1/4	9/16	0	7/8	7/16
6.25	6.0	5.7	AK64H	AH63	4	2.7	3/4	1 1/4	9/16	0	7/8	7/16
6.45	6.2	5.9	AK66H	AH65	4	2.8	3/4	1 1/4	9/16	0	7/8	7/16
6.75	6.5	6.2	AK69H	AH68	4	2.9	3/4	1 1/4	9/16	0	7/8	7/16
6.95	6.7	6.6	AK71H	AH70	4	3.1	3/4	1 1/4	9/16	0	7/8	7/16
7.25	7.0	6.7	AK74H	AH73	4	3.3	3/4	1 1/4	9/16	0	7/8	7/16
7.75	7.5	7.2	AK79H	AH78	4	3.5	3/4	1 1/4	9/16	0	7/8	7/16
7.95	7.7	7.4	AH80	---	4	2.9	3/4	1 1/4	9/16	0	7/8	7/16
8.25	8.0	7.7	AK84H	AH83	4	3.6	3/4	1 1/4	9/16	0	7/8	7/16
8.75	8.5	8.2	AK89H	AH88	4	4.0	3/4	1 1/4	9/16	0	7/8	7/16
8.95	8.7	8.4	AH90	---	4	2.8	3/4	1 1/4	9/16	0	7/8	7/16
9.25	9.0	8.7	AK94H	AH93	4	4.4	3/4	1 1/4	9/16	0	7/8	7/16
9.75	9.5	9.2	AK99H	---	4	4.7	3/4	1 1/4	9/16	0	7/8	7/16
9.95	9.7	9.4	AH100	---	4	4.0	3/4	1 1/4	9/16	0	7/8	7/16
10.25	10.0	9.7	AK104H	AH103	4	4.5	3/4	1 1/4	9/16	0	7/8	7/16
10.75	10.5	10.2	AK109H	---	4	5.1	3/4	1 1/4	9/16	0	7/8	7/16
10.95	10.7	10.4	AH110	---	4	3.9	3/4	1 1/4	9/16	0	7/8	7/16
11.25	11.0	10.7	AK114H	AH113	4	5.5	3/4	1 1/4	9/16	0	7/8	7/16
11.95	11.7	11.4	AH120	---	4	5.9	3/4	1 1/4	9/16	0	7/8	7/16
12.25	12.0	11.7	AK124H	AH123	4	6.1	3/4	1 1/4	9/16	0	7/8	7/16
12.95	12.7	12.4	AH130	---	4	7.2	7/8	1 1/4	7/16	0	7/8	7/16
13.25	13.0	12.7	AK134H	AH133	4	7.4	3/4	1 1/4	9/16	0	7/8	7/16
13.95	13.7	13.4	AH140	---	4	7.6	7/8	1 1/4	7/16	0	7/8	7/16
14.25	14.0	13.7	AK144H	AH143	4	7.8	3/4	1 1/4	9/16	0	7/8	7/16
14.95	14.7	14.4	AH150	---	4	9.5	7/8	1 1/4	7/16	0	7/8	7/16
15.25	15.0	14.7	AK154H	AH153	4	8.8	3/4	1 1/4	9/16	0	7/8	7/16
18.25	18.0	17.7	AK184H	AH183	4	11.3	3/4	1 1/4	9/16	0	7/8	7/16

## For Both Belt Sections "B" (5L) and "A" (4L)

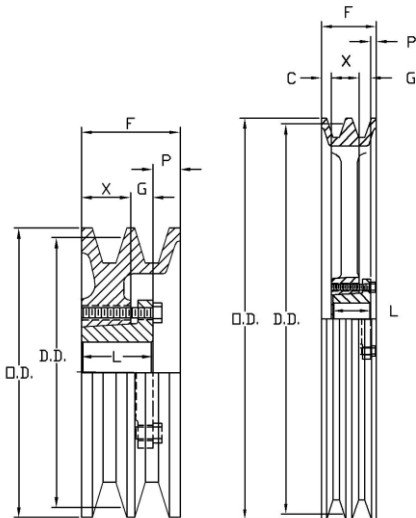
O.D. Inches	D.D. B Belts Inches	D.D. A Belts Inches	Part Number	Original Maurey Number	Style	Weight (Lbs)	Dimensions - Inches					
							F	L	P	C	X	G
3.15	2.8	2.4	BK30H	BH32	1	1.2	7/8	1-1/4	7/8	---	1 5/16	7/16
3.35	3.0	2.6	BK32H	BH34	1	1.4	7/8	1-1/4	7/8	---	1 5/16	7/16
3.55	3.2	2.8	BK34H	BH36	1	1.6	7/8	1-1/4	7/8	---	1 5/16	7/16
3.75	3.4	3.0	BK36H	BH38	2	1.2	7/8	1-1/4	7/16	---	7/8	7/16
3.95	3.6	3.2	BK40H	BH40	2	1.4	7/8	1-1/4	7/16	---	7/8	7/16
4.15	3.8	3.4	BH42	---	2	2.0	7/8	1-1/4	7/16	---	7/8	7/16
4.25	3.9	3.5	BK45H	---	2	1.8	7/8	1-1/4	7/16	---	7/8	7/16
4.35	4.0	3.6	BH44	---	2	2.5	7/8	1-1/4	7/16	---	7/8	7/16
4.45	4.1	3.7	BK47H	---	2	2.2	7/8	1-1/4	7/16	---	7/8	7/16
4.55	4.2	3.8	BH46	---	2	2.7	7/8	1-1/4	7/16	---	7/8	7/16
4.75	4.4	4.0	BK50H	BH48	2	2	7/8	1-1/4	7/16	---	7/8	7/16
4.95	4.6	4.2	BK52H	BH50	2	2.1	7/8	1-1/4	7/16	---	7/8	7/16
5.15	4.8	4.4	BH52	---	2	3.7	7/8	1-1/4	7/16	---	7/8	7/16
5.25	4.9	4.5	BK55H	BH53	2	2.7	7/8	1-1/4	7/16	---	7/8	7/16
5.35	5.0	4.6	BH54	---	4	1.9	7/8	1-1/4	7/16	---	7/8	7/16
5.45	5.1	4.7	BK57H	---	2	2.7	7/8	1-1/4	7/16	---	7/8	7/16
5.55	5.2	4.8	BH56	---	4	2.4	7/8	1-1/4	7/16	---	7/8	7/16
5.75	5.4	5.0	BK60H	BH58	2	2.5	7/8	1-1/4	7/16	---	7/8	7/16
5.95	5.6	5.2	BK62H	BH60	2	2.6	7/8	1-1/4	7/16	---	7/8	7/16
6.15	5.8	5.4	BH62	---	4	2.8	7/8	1-1/4	7/16	---	7/8	7/16
6.25	5.9	5.5	BK65H	---	2	2.8	7/8	1-1/4	7/16	---	7/8	7/16
6.35	6.0	5.6	BH64	---	4	2.8	7/8	1-1/4	7/16	---	7/8	7/16
6.45	6.1	5.7	BK67H	---	4	2.9	7/8	1-1/4	7/16	---	7/8	7/16
6.55	6.2	5.8	BH66	---	4	3.2	7/8	1-1/4	7/16	---	7/8	7/16
6.75	6.4	6.0	BK70H	BH68	4	2.8	7/8	1-1/4	1/2	1/16	7/8	7/16
6.95	6.6	6.2	BK72H	BH70	4	3.1	7/8	1-1/4	1/2	1/16	7/8	7/16
7.15	6.8	6.4	BH72	---	4	3.9	7/8	1-1/4	7/16	---	7/8	7/16
7.25	6.9	6.5	BK75H	---	4	3.3	7/8	1-1/4	1/2	1/16	7/8	7/16
7.45	7.1	6.7	BK77H	---	4	3.8	7/8	1-1/4	1/2	1/16	7/8	7/16
7.75	7.4	7.0	BK80H	BH78	4	3.4	7/8	1-1/4	1/2	1/16	7/8	7/16
8.25	7.9	7.5	BK85H	BH83	4	3.8	7/8	1-1/4	1/2	1/16	7/8	7/16
8.75	8.4	8.0	BK90H	BH88	4	4.3	7/8	1-1/4	1/2	1/16	7/8	7/16
8.95	8.6	8.2	BH90	---	4	3.9	7/8	1-1/4	7/16	---	7/8	7/16
9.25	8.9	8.5	BK95H	---	4	5.0	7/8	1-1/4	1/2	1/16	7/8	7/16
9.75	9.4	9.0	BK100H	BH98	4	5.2	7/8	1-1/4	1/2	1/16	7/8	7/16
10.25	9.9	9.5	BK105H	---	4	5.5	7/8	1-1/4	1/2	1/16	7/8	7/16
10.75	10.4	10.0	BK110H	BH108	4	6	7/8	1-1/4	1/2	1/16	7/8	7/16
11.25	10.9	10.5	BK115H	---	4	6.4	7/8	1-1/4	1/2	1/16	7/8	7/16
11.35	11.0	10.6	BH114	---	4	5.1	7/8	1-1/4	7/16	---	7/8	7/16
11.75	11.4	11.0	BK120H	BH118	4	6.9	7/8	1-1/4	1/2	1/16	7/8	7/16
12.75	12.4	12.0	BK130H	BH128	4	6.9	7/8	1-1/4	1/2	1/16	7/8	7/16
13.75	13.4	13.0	BK140H	---	4	8.5	7/8	1-1/4	1/2	1/16	7/8	7/16
13.95	13.6	13.2	BH140	---	4	6.1	7/8	1-1/4	7/16	---	7/8	7/16
14.75	14.4	14.0	BK150H	---	4	9.5	7/8	1-1/4	1/2	1/16	7/8	7/16
15.75	15.4	15.0	BK160H	BH158	4	9.8	7/8	1-1/4	1/2	1/16	7/8	7/16
18.75	18.4	18.0	BK190H	BH188	4	12.8	7/8	1-1/4	1/2	1/16	7/8	7/16



**STYLE 1**



**STYLE 2**



**STYLE 3  
(SOLID)**

**STYLE 4  
(SPOKED)**

**For Both Belt Sections "A" (4L) and "O" (3L)**

O.D. Inches	D.D. A Belts Inches	D.D. O Belts Inches	Part Number	Original Maurey Number	Style	Weight (Lbs)	Dimensions - Inches					
							F	L	P	C	X	G
3.05	2.8	2.5	2AK30H	DH2300	1	1.4	1 3/8	1 1/4	7/8	15/16	7/8	7/16
3.25	3.0	2.7	2AK32H	DH2325	1	1.7	1 3/8	1 1/4	7/8	15/16	7/8	7/16
3.45	3.2	2.9	2AK34H	DH2350	2	1.8	1 3/8	1 1/4	7/16	1/2	7/8	7/16
3.75	3.5	3.2	2AK39H	DH2380	2	1.8	1 3/8	1 1/4	7/16	1/2	7/8	7/16
3.95	3.7	3.4	2AK41H	DH2400	3	1.9	1 3/8	1 1/4	1/16	---	7/8	7/16
4.25	4.0	3.7	2AK44H	DH2425	3	2.4	1 3/8	1 1/4	1/16	---	7/8	7/16
4.45	4.2	3.9	2AK46H	DH2450	3	2.5	1 3/8	1 1/4	1/16	---	7/8	7/16
4.75	4.5	4.2	2AK49H	DH2480	3	3.1	1 3/8	1 1/4	1/16	---	7/8	7/16
4.95	4.7	4.4	2AK51H	DH2500	3	3.2	1 3/8	1 1/4	1/16	---	7/8	7/16
5.25	5.0	4.7	2AK54H	DH2525	3	3.4	1 3/8	1 1/4	1/16	---	7/8	7/16
5.45	5.2	4.9	2AK56H	DH2550	3	3.6	1 3/8	1 1/4	1/16	---	7/8	7/16
5.75	5.5	5.2	2AK59H	DH2580	4	3.4	1 3/8	1 1/4	1/16	0	7/8	7/16
5.95	5.7	5.4	2AK61H	DH2600	4	3.3	1 3/8	1 1/4	1/16	0	7/8	7/16
6.25	6.0	5.7	2AK64H	---	4	3.9	1 3/8	1 1/4	1/16	0	7/8	7/16
6.45	6.2	5.9	DH2650	---	4	4.9	1 3/8	1 1/4	1/16	0	7/8	7/16
6.95	6.7	6.4	DH2700	---	4	5.4	1 3/8	1 1/4	1/16	0	7/8	7/16
7.25	7.0	6.7	2AK74H	DH2730	4	4.9	1 3/8	1 1/4	1/16	0	7/8	7/16
7.95	7.7	7.4	DH2800	---	4	5.9	1 3/8	1 1/4	1/16	0	7/8	7/16
8.25	8.0	7.7	2AK84H	---	4	5.8	1 3/8	1 1/4	1/16	0	7/8	7/16
8.95	8.7	8.4	DH2900	---	4	7.2	1 3/8	1 1/4	1/16	0	7/8	7/16
9.25	9.0	8.7	2AK94H	DH2930	4	6.1	1 3/8	1 1/4	1/16	0	7/8	7/16
9.95	9.7	9.4	DH3100	---	4	8.6	1 3/8	1 1/4	1/16	0	7/8	7/16
10.25	10.0	9.7	2AK104H	DH3103	4	7.7	1 3/8	1 1/4	1/16	0	7/8	7/16
10.95	10.7	10.4	DH3110	---	4	10.2	1 3/8	1 1/4	1/16	0	7/8	7/16
11.25	11.0	10.7	2AK114H	---	4	8.5	1 3/8	1 1/4	1/16	0	7/8	7/16
11.95	11.7	11.4	DH3120	---	4	10.7	1 3/8	1 1/4	1/16	0	7/8	7/16
12.25	12.0	11.7	2AK124H	DH3123	4	9.5	1 3/8	1 1/4	1/16	0	7/8	7/16
13.25	13.0	12.7	2AK134H	---	4	11.4	1 3/8	1 1/4	1/16	0	7/8	7/16
14.25	14.0	13.7	2AK144H	DH3143	4	11.9	1 3/8	1 1/4	1/16	0	7/8	7/16
15.25	15.0	14.7	2AK154H	DH3153	4	13.3	1 3/8	1 1/4	1/16	0	7/8	7/16
18.25	18.0	17.7	2AK184H	DH3183	4	16.8	1 3/8	1 1/4	1/16	0	7/8	7/16

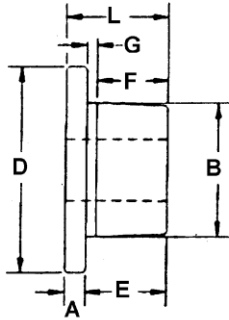
**For Both Belt Sections "B" (5L) and "A" (4L)**

O.D. Inches	D.D. A Belts Inches	D.D. O Belts Inches	Part Number	Original Maurey Number	Style	Weight (Lbs)	Dimensions - Inches					
							F	L	P	C	X	G
3.35	3.0	2.6	2BK32H	DH4340	1	2.1	1 3/4	1 1/4	7/8	15/16	7/8	7/16
3.55	3.2	2.8	2BK34H	DH4360	1	2.4	1 3/4	1 1/4	7/8	15/16	7/8	7/16
3.75	3.4	3.0	2BK36H	DH4380	1	2.0	1 3/4	1 1/4	7/16	7/8	7/8	7/16
3.95	3.6	3.2	2BK40H	DH4400	1	2.4	1 3/4	1 1/4	7/16	7/8	7/8	7/16
4.15	3.8	3.4	DH4420	---	2	3.5	1 3/4	1 1/4	7/16	15/16	7/8	7/16
4.25	3.9	3.5	2BK45H	---	1	3.0	1 3/4	1 1/4	7/16	7/8	7/8	7/16
4.35	4.0	3.6	DH4440	---	3	3.1	1 3/4	1 1/4	7/16	---	7/8	7/16
4.45	4.1	3.7	2BK47H	---	3	2.8	1 3/4	1 1/4	7/16	---	7/8	7/16
4.55	4.2	3.8	DH4460	---	3	3.8	1 3/4	1 1/4	7/16	---	7/8	7/16
4.75	4.4	4.0	2BK50H	DH4480	3	3.3	1 3/4	1 1/4	7/16	---	7/8	7/16
4.95	4.6	4.2	2BK52H	DH4500	3	3.6	1 3/4	1 1/4	7/16	---	7/8	7/16
5.15	4.8	4.4	DH4520	---	3	4.8	1 3/4	1 1/4	7/16	---	7/8	7/16
5.25	4.9	4.5	2BK55H	---	3	3.9	1 3/4	1 1/4	7/16	---	7/8	7/16
5.35	5.0	4.6	DH4540	---	3	4.9	1 3/4	1 1/4	7/16	---	7/8	7/16
5.45	5.1	4.7	2BK57H	---	3	4.3	1 3/4	1 1/4	7/16	---	7/8	7/16
5.55	5.2	4.8	DH4560	---	4	4.0	1 3/4	1 1/4	7/16	---	7/8	7/16
5.75	5.4	5.0	2BK60H	DH4580	3	4.4	1 3/4	1 1/4	7/16	---	7/8	7/16
5.95	5.6	5.2	2BK62H	DH4600	3	4.5	1 3/4	1 1/4	7/16	---	7/8	7/16
6.15	5.8	5.4	DH4620	---	4	5.1	1 3/4	1 1/4	7/16	---	7/8	7/16
6.25	5.9	5.5	2BK65H	---	4	4.5	1 3/4	1 1/4	7/16	1/4	7/8	7/16
6.35	6.0	5.6	DH4640	---	4	5.9	1 3/4	1 1/4	7/16	---	7/8	7/16
6.45	6.1	5.7	2BK67H	---	4	5.0	1 3/4	1 1/4	7/16	1/4	7/8	7/16
6.55	6.2	5.8	DH4660	---	4	5.2	1 3/4	1 1/4	7/16	---	7/8	7/16
6.75	6.4	6.0	2BK70H	DH4680	4	5.1	1 3/4	1 1/4	7/16	1/4	7/8	7/16
6.95	6.6	6.2	DH4700	---	4	5.6	1 3/4	1 1/4	7/16	---	7/8	7/16
7.15	6.8	6.4	DH4720	---	4	6.9	1 3/4	1 1/4	7/16	---	7/8	7/16
7.75	7.4	7.0	2BK80H	DH4780	4	6.4	1 3/4	1 1/4	7/16	1/4	7/8	7/16
8.75	8.4	8.0	2BK90H	DH4880	4	7.6	1 3/4	1 1/4	7/16	1/4	7/8	7/16
8.95	8.6	8.2	DH4900	---	4	7.4	1 3/4	1 1/4	7/16	---	7/8	7/16
9.75	9.4	9.0	2BK100H	DH4980	4	8.4	1 3/4	1 1/4	7/16	1/4	7/8	7/16
10.75	10.4	10.0	2BK110H	DH5108	4	9.3	1 3/4	1 1/4	7/16	1/4	7/8	7/16
11.35	11.0	10.6	DH5114	---	4	12.0	1 3/4	1 1/4	7/16	---	7/8	7/16
11.75	11.4	11.0	2BK120H	DH5118	4	11.0	1 3/4	1 1/4	7/16	1/4	7/8	7/16
12.75	12.4	12.0	2BK130H	DH5128	4	13.1	1 3/4	1 1/4	7/16	1/4	7/8	7/16
13.75	13.4	13.0	2BK140H	---	4	14.8	1 3/4	1 1/4	7/16	1/4	7/8	7/16
13.95	13.6	13.2	DH5140	---	4	14.1	1 3/4	1 1/4	7/16	1/4	7/8	7/16
15.75	15.4	15.0	2BK160H	DH5158	4	17.5	1 3/4	1 1/4	7/16	1/4	7/8	7/16
18.75	18.4	18.0	2BK190H	DH5188	4	21.5	1 3/4	1 1/4	7/16	1/4	7/8	7/16



## HQ Ful-grip Bushings

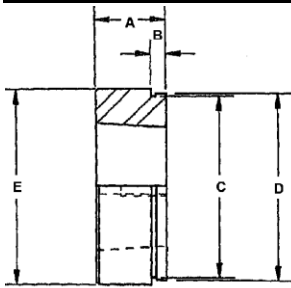
HQ BUSHING DIMENSIONS (inches)								
A	B	D	E	F	G	L	Bolt Circle	Cap Screws
1/4	1-5/8	2-1/2	1	7/8	1/8	1-1/4	2	2-1/4 x 3/4



When Ordering Specify Bore Size

For Example: HQ x 3/4"

STOCK BORES	
BORE (inches)	KEYSEAT
3/8, 7/16, 1/2, 9/16	NONE
5/8, 11/16, 3/4, 3/16, 7/8	3/16 X 3/32
15/16, 1, 1-1/16, 1-1/8, 1-3/16	1/4 X 1/8
1-1/4	1/4 X 1/16
1-5/16, 1-3/8	5/16 X 1/16
1-7/16, 1-1/2	3/8 X 1/16
BORE (mm)	KEYSTOCK
14, 15, 16, 17	5 x 5
18, 19, 20, 22	6 x 6
24, 25, 28, 30	8 x 7
32, 35, 38	10 x 8



## weld-on hub for HQ bushing

Part Number HHQ1 or HHQ2

HUB DIMENSIONS (inches)					
Part Number	A	B	C	D	E
HHQ1	7/8	3/16	2.311	2-3/8	2-1/2
HHQ2	7/8	0.532	2.311	2-3/8	2-1/2



## steel shaft collars

steel shaft collars

Made from cold rolled steel precision machined for true Running faces. Locked in position for vibration proof Service with cup point, hollow head set screws.



### ORDER IN STANDARD PACKAGE QUANTITIES

Part Number	Bore Inches	Outside Diameter Inches	Width Inches	Size of Set Screw	Weight Ounces Each	Std. Pkg. Qty	Part Number	Bore Inches	Outside Diameter Inches	Width Inches	Size of Set Screw	Weight Ounces Each	Std.* Pkg. Qty
1544	3/16	7/16	1/4	8-32 X 1/8"	1/5	50	1517	1-1/2	2-1/4	3/4	3/8 X 3/8"	7-1/2	25
1542	1/4	5/8	9/32	10-32 X 1/8"	1/4	50	1521	1-9/16	2-1/2	13/16	3/8 X 3/8"	10-3/4	10
1543	5/16	5/8	11/32	10-32 X 1/8"	1/2	50	1522	1-5/8	2-1/2	13/16	3/8 X 3/8"	10	10
1500	3/8	3/4	3/8	1/4 X 3/16"	1/2	50	1518	1-11/16	2-1/2	13/16	3/8 X 3/8"	9-1/4	10
1501	7/16	7/8	7/16	1/4 X 1/4"	1	50	1523	1-3/4	2-3/4	7/8	1/2 X 1/2"	13-1/2	10
1502	1/2	1	7/16	1/4 X 1/4"	1-1/4	50	1524	1-13/16	2-3/4	7/8	1/2 X 1/2"	13	10
1503	9/16	1	7/16	1/4 X 1/4"	1-1/4	25	1525	1-7/8	2-3/4	7/8	1/2 X 1/2"	12-1/4	10
1504	5/8	1-1/8	1/2	5/16 X 1/4"	1-1/2	25	1519	1-15/16	3	7/8	1/2 X 1/2"	16-1/4	10
1505	11/16	1-1/4	9/16	5/16 X 1/4"	2	25	1526	2	3	7/8	1/2 X 1/2"	16	10
1506	3/4	1-1/4	9/16	5/16 X 1/4"	2	25	1530	2-1/8	3	7/8	1/2 X 1/2"	16	5
1507	13/16	1-5/16	9/16	5/16 X 1/4"	2	25	1531	2-3/16	3-1/4	15/16	1/2 X 1/2"	18-1/2	5
1508	7/8	1-1/2	9/16	5/16 X 5/16"	2-1/2	25	1532	2-1/4	3-1/4	15/16	1/2 X 1/2"	17-1/2	5
1509	15/16	1-5/8	9/16	5/16 X 5/16"	3-1/4	25	1533	2-5/16	3-1/4	15/16	1/2 X 1/2"	17-1/4	5
1510	1	1-5/8	5/8	5/16 X 5/16"	4	25	1534	2-3/8	3-1/4	15/16	1/2 X 1/2"	22	5
1511	1-1/16	1-3/4	5/8	5/16 X 5/16"	4-1/4	25	1535	2-7/16	3-1/2	1	1/2 X 1/2"	21-3/4	5
1512	1-1/8	1-3/4	5/8	5/16 X 5/16"	3-3/4	25	1536	2-1/2	3-1/2	1	1/2 X 1/2"	20-3/4	5
1513	1-3/16	2	11/16	3/8 X 3/8"	6	25	1537	2-9/16	3-3/4	1-1/8	1/2 X 5/8"	30	5
1514	1-1/4	2	11/16	3/8 X 3/8"	6	25	1538	2-11/16	4	1-1/8	1/2 X 5/8"	35	5
1520	1-5/16	2-1/8	11/16	3/8 X 3/8"	6-1/2	25	1539	2-3/4	4	1-1/8	1/2 X 5/8"	34	5
1515	1-3/8	2-1/8	3/4	3/8 X 3/8"	6-1/2	25	1540	2-15/16	4-1/4	1-1/8	1/2 X 5/8"	38	5
1516	1-7/16	2-1/4	3/4	3/8 X 3/8"	7-3/4	25	1541	3	4-1/4	1-1/8	1/2 X 5/8"	36	5

\* Maurey Steel Shaft Collars Only Sold in Multiples of Standard Package Quantities (No Broken Lots)



Single Groove Sheave



Double Groove Sheave

## INSTALLATION AND REMOVAL OF HQ BUSHINGS

### INSTALLATION:

1. Make sure the bore of the sheave and the tapered cone surface of the bushing are free of all foreign substances such as paint, dirt, lubricants, etc. Do not use lubricants on installation.
2. Assemble as illustrated, by inserting two cap screws through clearance holes in bushing. Cap Screws are to be loosely inserted in sheave so that bushing easily slides on to shaft.
3. Place keystone in keyseat between shaft and bore of bushing.
4. Tighten screws progressively. (See tightening instructions.)

### TIGHTENING INSTRUCTIONS:

When mounting HQ Bushings which are slotted all the way through to maintain even torque (Ful-Grip Design), tightening forces on the screws are multiplied many times by the wedging action of the tapered surface. If extreme screw tightening forces are applied in mounting the HQ Bushing, bursting pressure will be created in the hub of the mounted sheave which may cause it to crack, and void the warranty.

CAUTION: Do not use lubricants on screw threads or tapered surfaces  
Refer to the recommended torque ratings.  
Tighten bushing screws evenly and progressively

### REMOVAL INSTRUCTIONS:

1. Loosen and remove cap screws.
2. Insert cap screws in threaded holes of bushing.
3. Tighten evenly until sheave is loose on shaft.

### WRENCH TORQUE VALUE FOR TIGHTENING HQ FUL-GRIP BUSHING

Bushing	Wrench Torque In Pounds	Wrench Length In Inches	Wrench Pull In Pounds
HQ	90	4	22
HQ	90	10	9